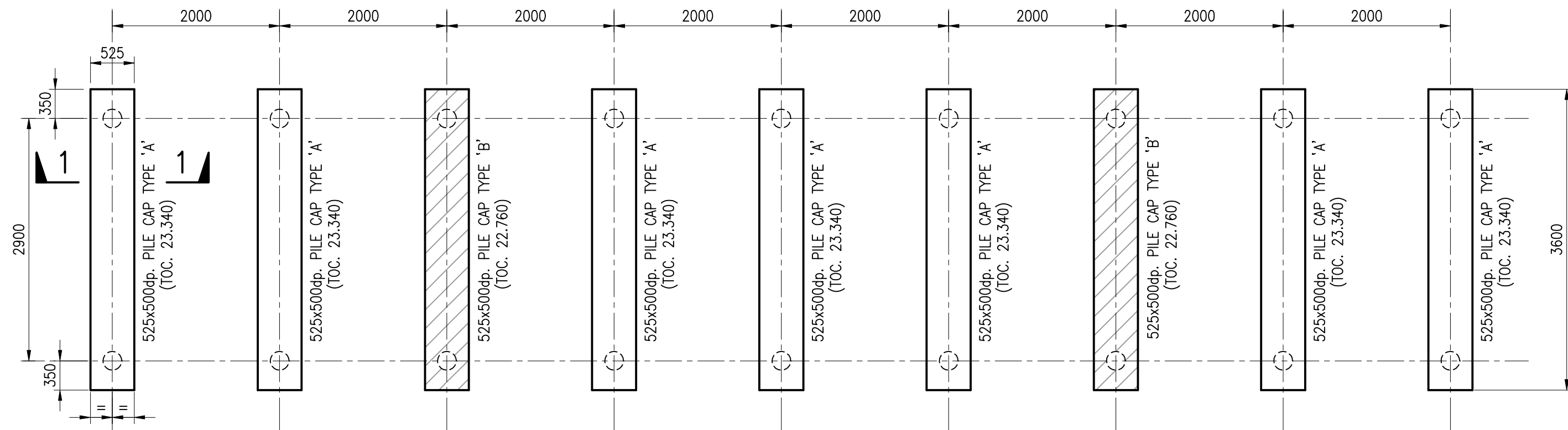


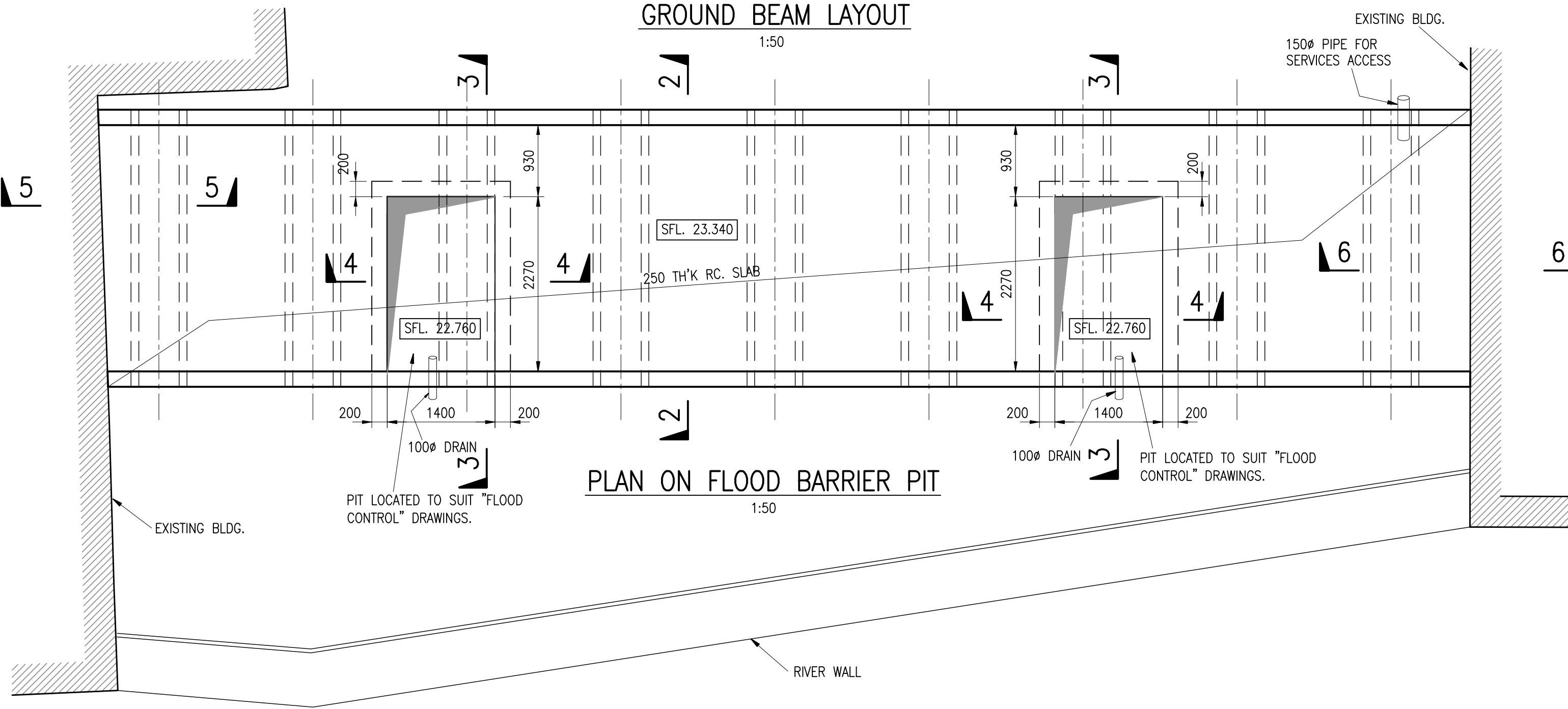
PILE LAYOUT

1:50



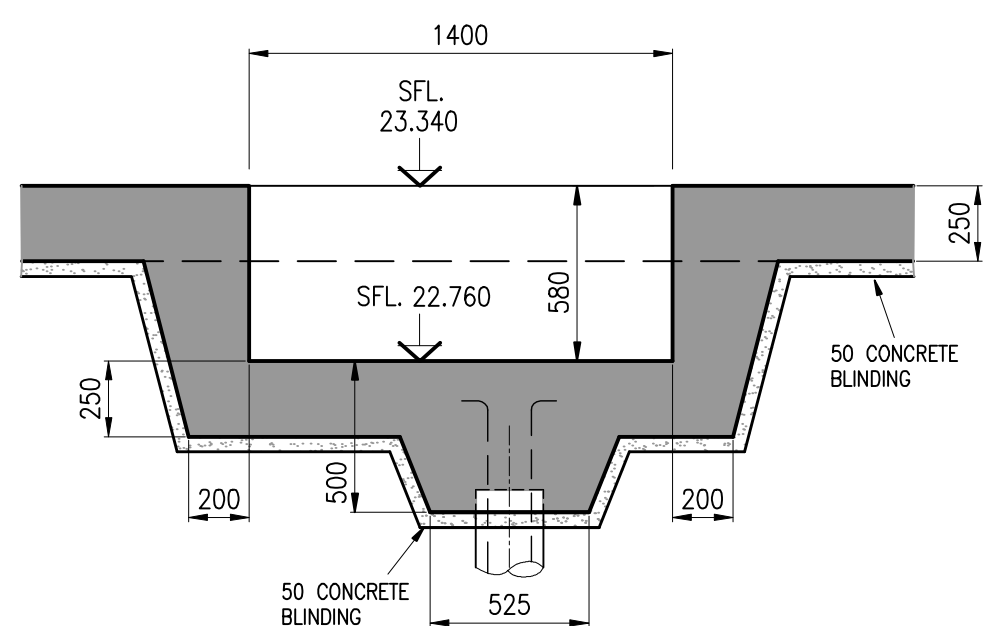
GROUND BEAM LAYOUT

1:50



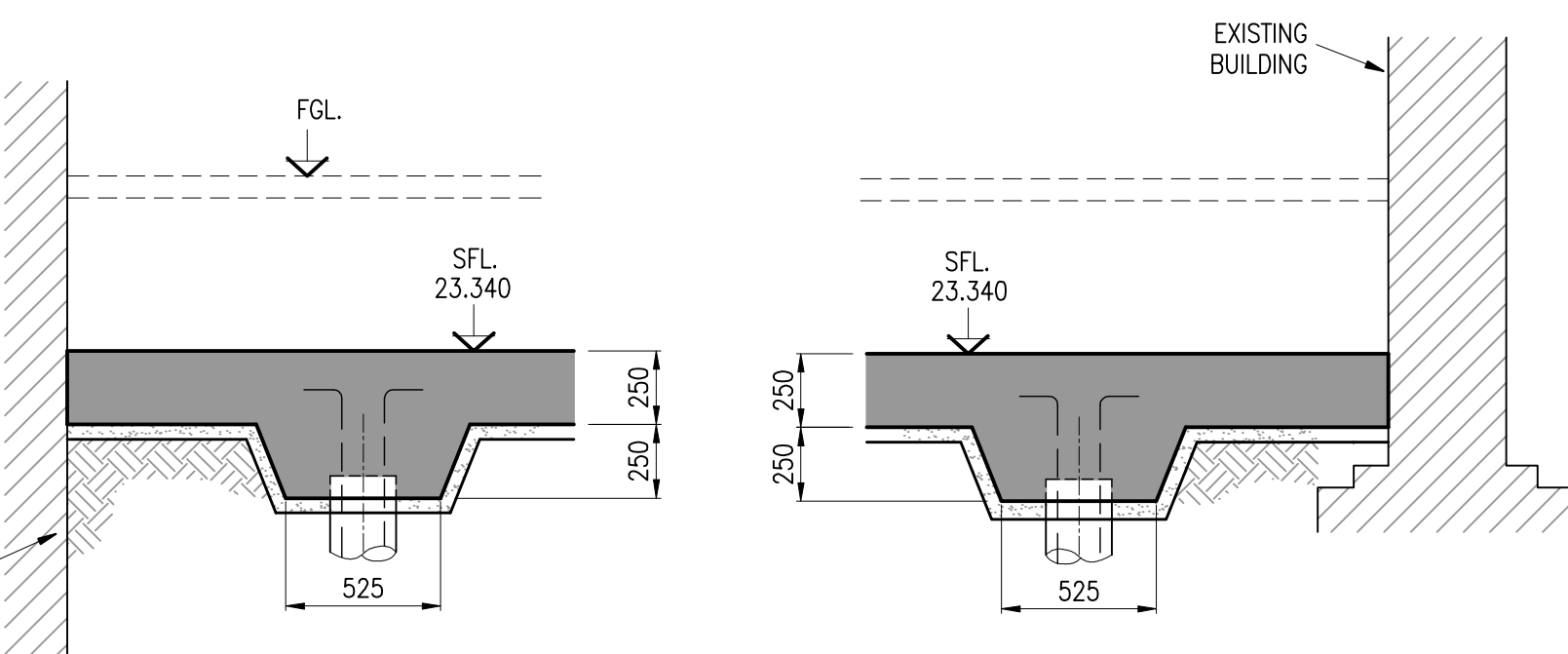
PLAN ON FLOOD BARRIER PIT

1:50



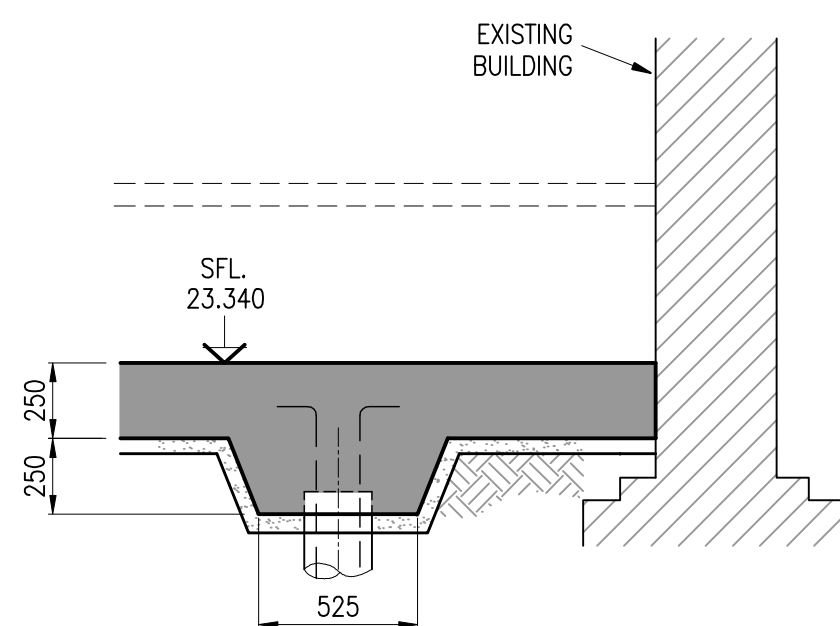
SECTION 4-4

1:25



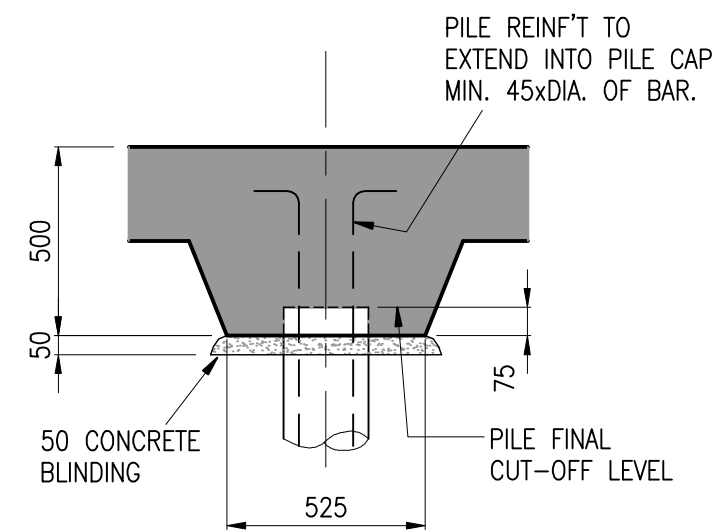
SECTION 5-5

1:25



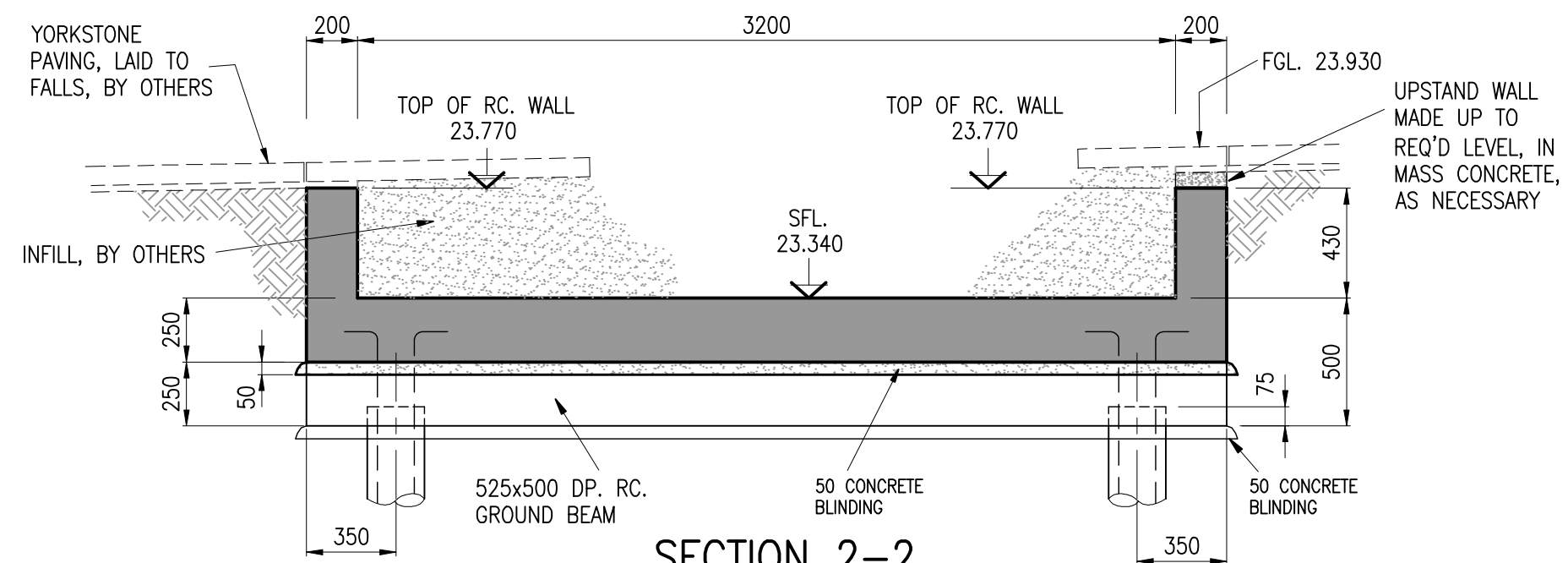
SECTION 6-6

1:25



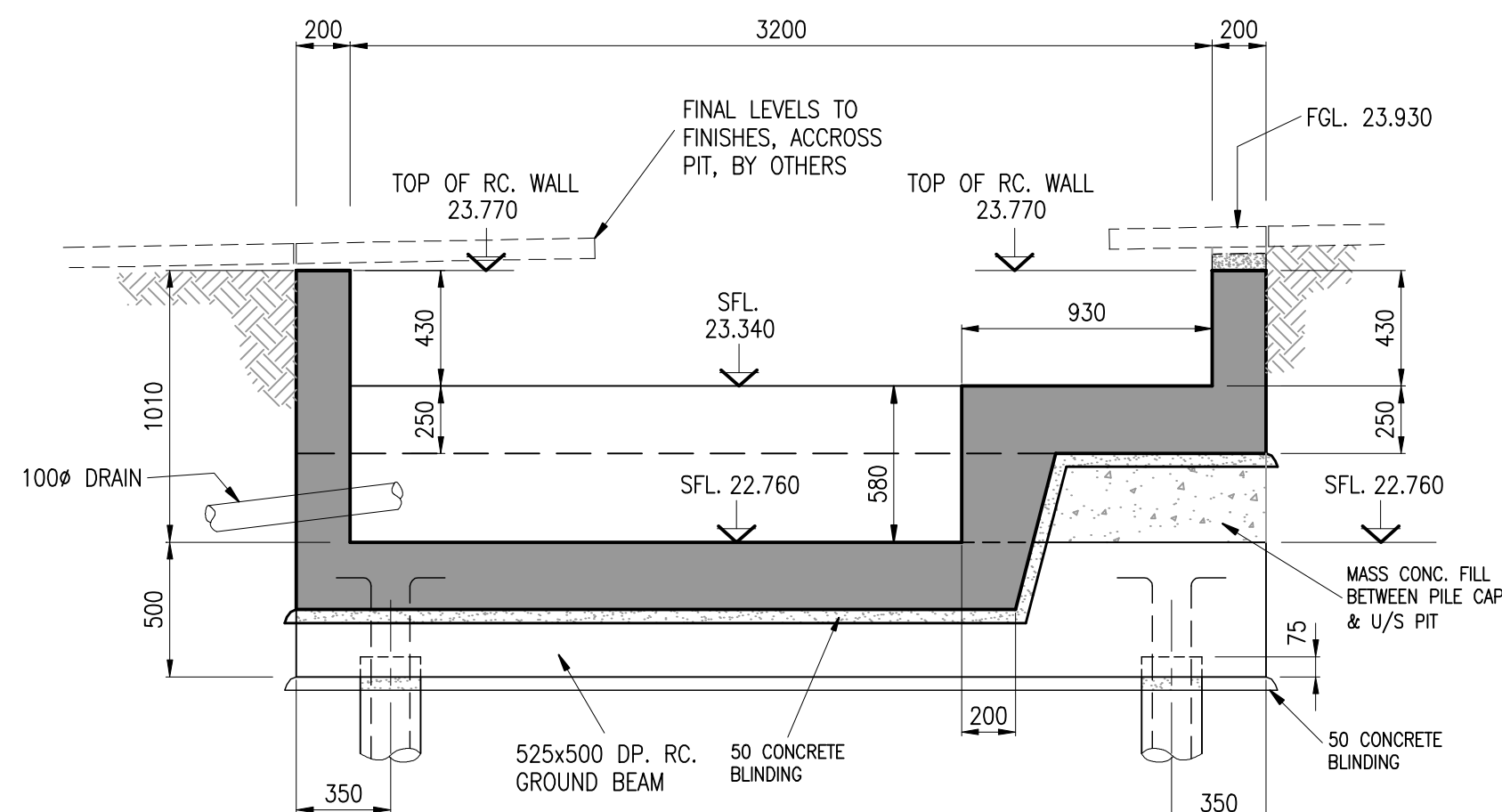
SECTION 1-1

1:20



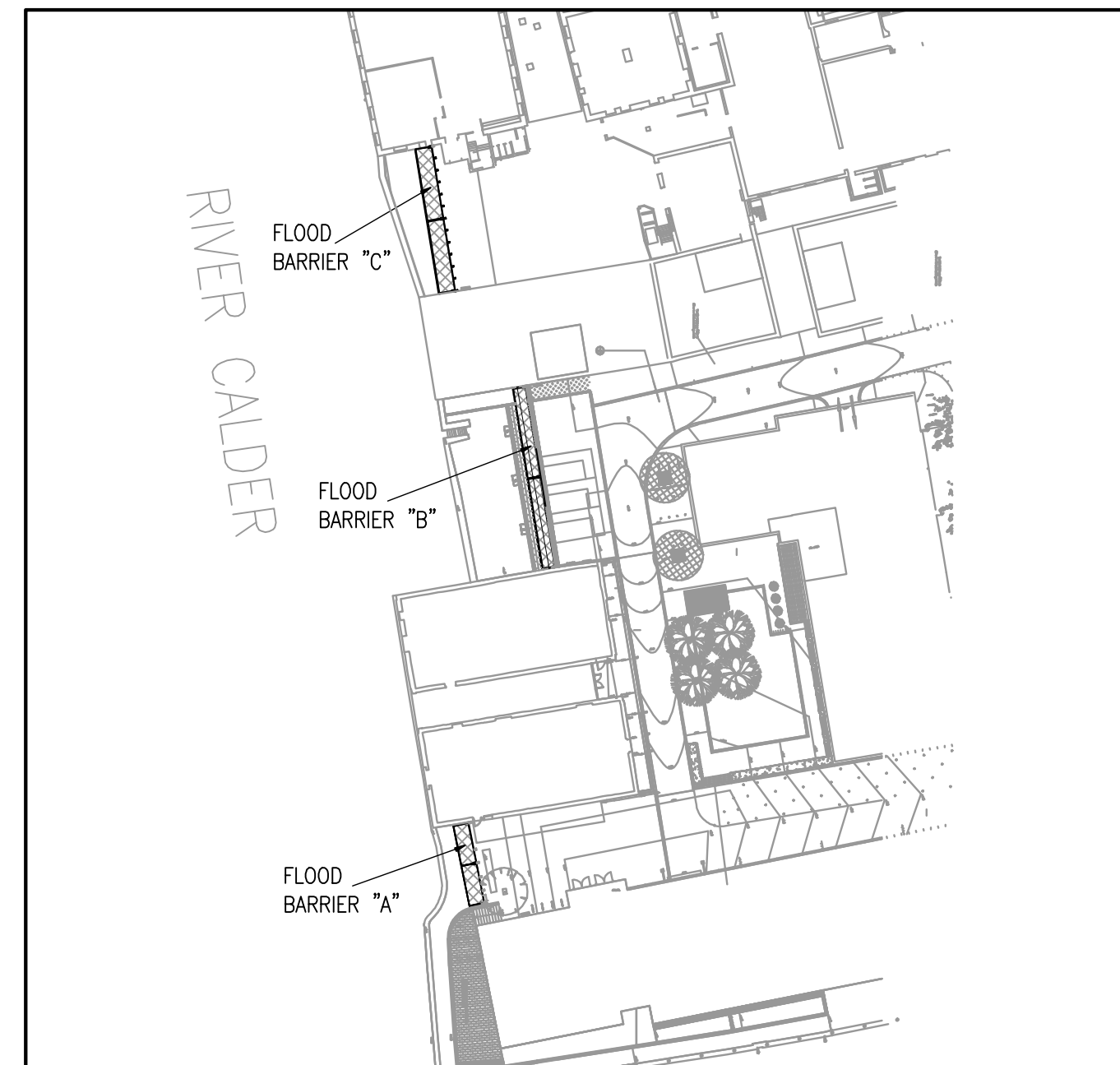
SECTION 2-2

1:25



SECTION 3-3

1:25



PILE SCHEDULE						COMMENTS
PILE No.	PILE LOADING (SERVICE)				CUT-OFF LEV. (m) (DATUM=FFL)	
	AXIAL (kN)		SHEAR (kN)	MOMENT (kNm)		
1	+120	-15	20	-	22.915	
2				-	22.915	
3				-	22.915	
4				-	22.915	
5				-	22.335	
6				-	22.335	
7				-	22.915	
8				-	22.915	
9				-	22.915	
10				-	22.915	
11				-	22.915	
12				-	22.915	
13				-	22.335	
14				-	22.335	
15				-	22.915	
16				-	22.915	
17				-	22.915	
18	↘	↘	↘	-	22.915	

NOTES.

ALL MATERIALS AND WORKMANSHIP TO COMPLY WITH SEJC CONSULTING ENGINEERS STANDARD SPECIFICATION FOR REINFORCED CONCRETE AND ALL RELEVANT BRITISH STANDARDS.

THIS DRAWING TO BE READ IN CONJUNCTION WITH ALL RELEVANT ARCHITECTS AND SEJC CONSULTING ENGINEERS DRAWINGS.

FOR DETAILS OF REINFORCEMENT REFER TO SEJC CONSULTING ENGINEERS DRAWING NUMBER 501180C/20-317

FOR DETAILS OF CONCRETE MIX REFER TO SEJC STANDARD CONCRETE SPECIFICATION.

ALL CONCRETE TO BE VIBRATED IN ACCORDANCE WITH SEJC CONSULTING ENGINEERS STANDARD SPECIFICATION FOR REINFORCED CONCRETE.

LOCAL SOFT SPOTS TO BE REPORTED TO SEJC CONSULTING ENGINEERS.

BLINDING CONCRETE TO BE C20.

REVISIONS

STATUS:-

AS-BUILT

DRAWN BY: SH DATE: NOV '07

CHECKED BY: DATE:

PROJECT ENGINEER: DATE:

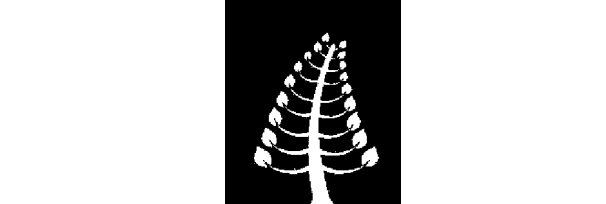
CLIENT

CTP & JAMES

PROJECT

WAKEFIELD WATERFRONT

BUILDING 20



SEJC Consulting Engineers
Consulting Structural & Civil Engineers

Sanderson House, Station Road, Horsforth, Leeds LS18 5NT
Telephone 0113 2590090 Fax 0113 2586640

TITLE
FLOOD BARRIER TYPE 'C'
FOUNDATION & PIT SET OUT

SCALES AS SHOWN

CONTRACT No 501180C

DRG No 20-011

A1 - (1:1)